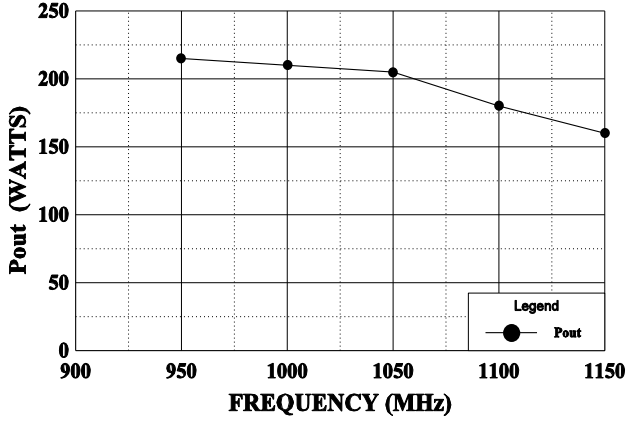


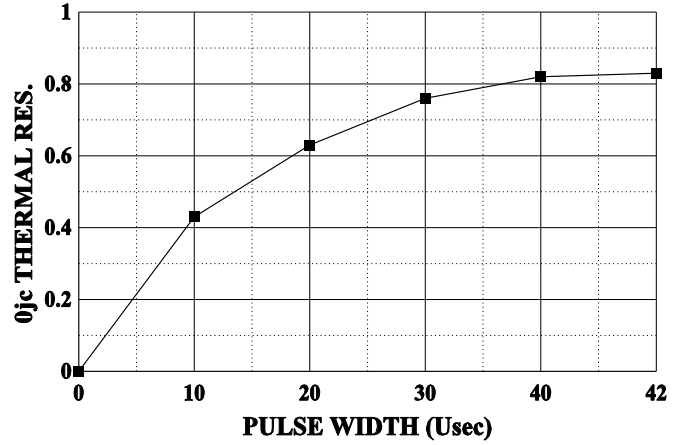
POWER OUTPUT vs FREQUENCY

Vcc = 50 V, Pin = 25 W



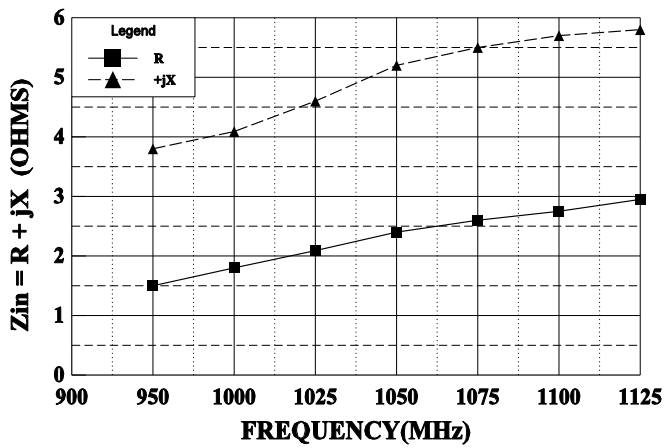
THERMAL RESISTANCE vs PULSE WIDTH

Vcc = 50 V, Tf = 300 C



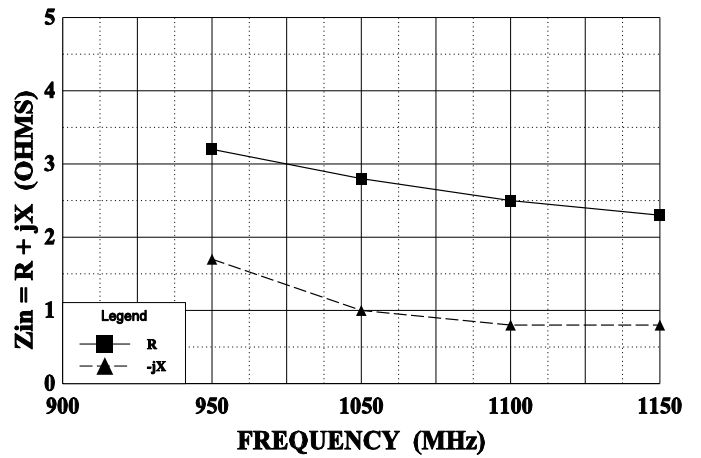
SERIES INPUT IMPEDANCE vs FREQUENCY

Vcc = 50 V, Po = 175 W



SERIES LOAD IMPEDANCE vs FREQUENCY

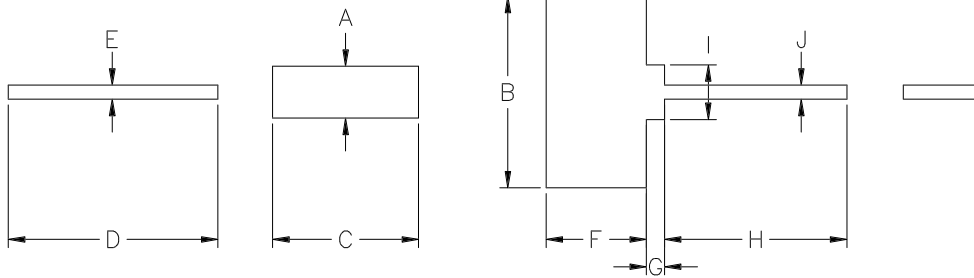
Vcc = 50 V, Po = 175 W



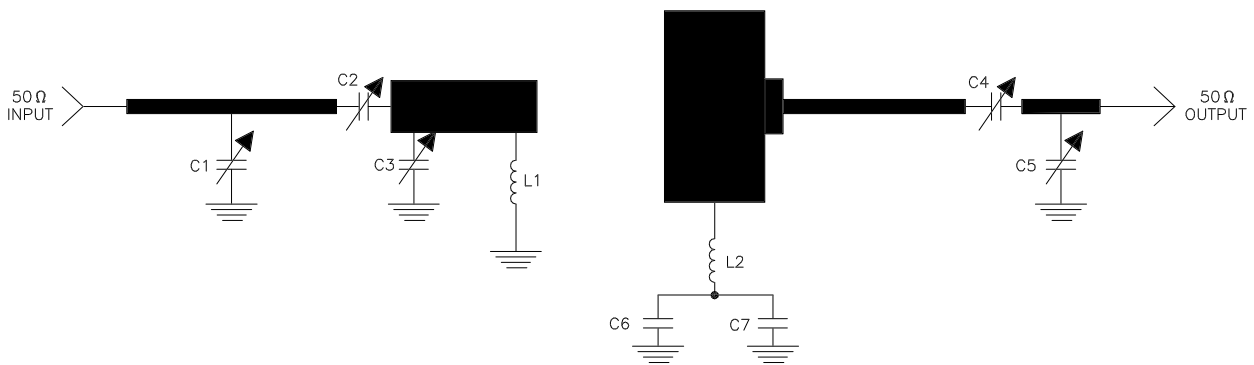
REVISIONS

ZONE	REV	DESCRIPTION	DATE	APPROVED
------	-----	-------------	------	----------

DIM	INCHES
A	.285
B	1.050
C	.800
D	1.150
E	.078
F	.550
G	.100
H	1.000
I	.300
J	.078



1030/1090 TEST AMPLIFIER



Material 1/32" Teflon Fiberglass
 C1,C3,C5 = .3-3.5 Johanson
 C2,C4 = .6-6 Johanson
 C6 = 82pf A.T.C.
 C7 = 200µf Electrolytic
 L1 = #18 AWG 0.6" LONG
 L2 = #18 AWG 1.0" LONG



CAGE OPJR2	DWG NO. TPR 175	REV A
SCALE 1/1	SHEET	