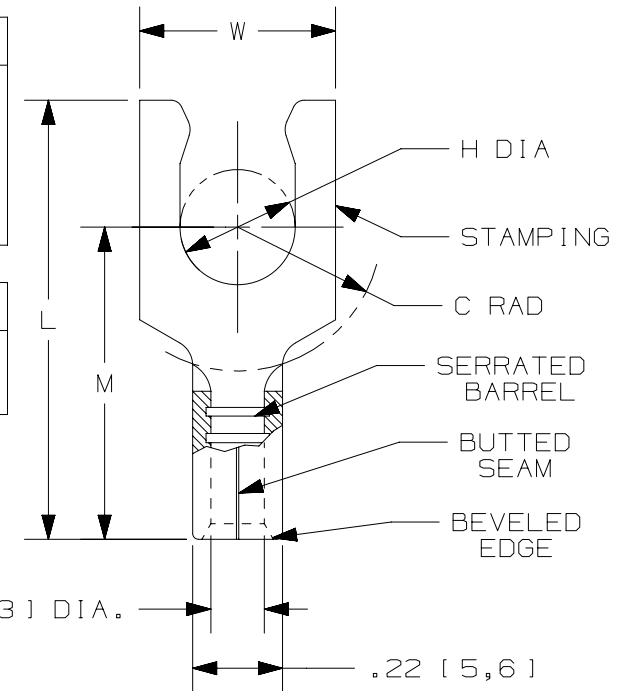


THIS COPY IS PROVIDED ON A RESTRICTED BASIS AND IS NOT TO BE USED IN ANY WAY DETRIMENTAL TO THE INTERESTS OF PANDUIT CORP.

PANDUIT PART #	STUD SIZE	DIMENSIONS in. [mm]				
		L ± .02 [0,5]	W ± .01 [0,3]	C ± .02 [0,5]	M ± .02 [0,5]	H ± .01 [0,3]
E10-6LFB	#6	.77 [19,6]	.30 [7,6]	.23 [5,8]	.53 [13,5]	.14 [3,6]
E10-8LFB	#8	.79 [20,1]	.30 [7,6]	.23 [5,8]	.53 [13,5]	.16 [4,1]
E10-10LFB	#10	.79 [20,1]	.34 [8,6]	.23 [5,8]	.53 [13,5]	.19 [4,8]
E10-14LFB	1/4"	.92 [23,4]	.46 [11,7]	.33 [8,4]	.63 [16,0]	.25 [6,4]

UL & CSA TOOLS
CT-100A
CT-200
CT-600-A (CT-570CH)
CT-1570
CT-1701 (P10)
CT-2500 (CT-2570CH)

PANDUIT APPROVED TOOLS
CT-160
CT-260



NOTES:

- UL LISTED & CSA CERTIFIED FOR:
  - #12-10 AWG [4,0-6,0mm<sup>2</sup>] SOLID OR STRANDED COPPER WIRE
  - 302°F [150°C] MAX OPERATING TEMPERATURE
  - 2000 VOLTS MAX
- MATERIAL:
  - STAMPING: .04" [1,0] THK COPPER, TIN PLATED
- WIRE STRIP LENGTH: 9/32" <sup>+1/32</sup><sub>-0</sub> [7,1mm <sup>+0,8</sup><sub>-0</sub>]
- SEE [www.panduit.com](http://www.panduit.com) FOR PACKAGE QUANTITIES
- DIMENSIONS IN BRACKETS ARE METRIC EQUIVALENT



TITLE	
<b>STRONGHOLD LOCKING FORK TERMINALS NON-INSULATED, BUTTED SEAM, #12-10 AWG</b>	
CUSTOMER DRAWING	
ITEM REVISION NAME	00123SHQ/00
DATASET FILE NAME	00123SHQ_DC/00
UNLESS OTHERWISE SPECIFIED, DIMENSIONAL TOLERANCES ARE: IN [mm]	<b>PANDUIT</b>
.X ± .XX ±	
.XXX ± ANGLES ±	DRAWING NUMBER: SH41287
THIRD ANGLE PROJECTION	
DRAWN BY JHNU	DATE 2/18
CHK TMR	SCALE N.T.S.
SHEET 1 OF 1	
A	

REV	DATE	BY	CHK	APR	DESCRIPTION	ECN
00	2/18	JHNU	TMR	RGB	RELEASED	00123SH

D10100DA/12